



Use for

DIRECT COMPOSITE VENEERS



Quickly and easily create beautiful anterior restorations for one or multiple teeth

VENEER TEMPORARIES



Give your patients beautiful temporaries during porcelain veneer fabrication

CUSTOM SHADE GUIDE



Create a shade template for porcelain veneers

MOCK-UPS



Easily prepare direct chairside mock-ups to show the patient before conducting the procedure

The Uvener template kit includes 32 templates:

- Two sizes (medium and large) both maxillary and mandibular arches
- Each arch consists of 8 templates from centrals to premolars (bicuspides)
- The size (M or L) and the tooth number (based on the Palmer System) are embedded on the handle

- Allows for predictable, high-quality, natural-looking composite restorations
- Prevents the oxygen inhibition layer during curing, resulting in a hard, glossy surface
- Allows light to pass through the template to the composite for effective curing
- Works with any preferred composite
- Releases easily from cured composite resin
- Requires minimal adjusting or polishing, saving time
- Facilitates application on individual or multiple teeth
- Is autoclavable and reusable, making it a cost-effective choice

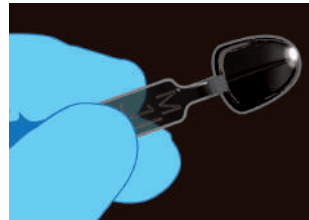
## Uvener Technique For Direct Composite Veneers:



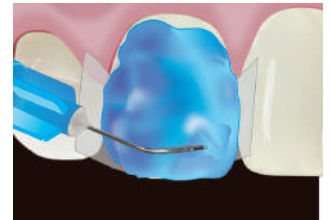
**1.** Remove all caries and if needed, conservatively prepare the tooth.



**2.** Choose the composite shade. Vita-I-scence PF (pearl frost) enamel shade is best for teeth after bleaching.



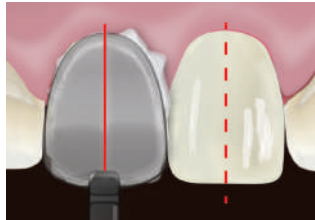
**3.** Select the Uvener™ template that corresponds with the tooth number you are restoring (the tooth number is embedded template handle).



**4.** Place interproximal separating matrices and apply Ultra-Etch®, Peak® SE Primer, or preferred etch.



**5.** Apply the composite free-hand onto the tooth surface. Do not cure yet.



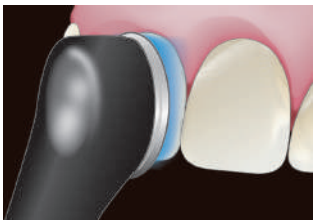
**6.** Lightly press the chosen Uvener template onto the composite, and align the template midline parallel to the midline of the face and perpendicular to the incisal plane. Do not light cure yet.



**7.** Clean any excess composite from the edges of the Uvener with an instrument of your choice. Should any excess composite remain, you can remove it after curing.



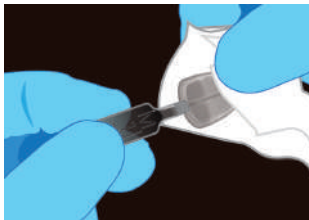
**8.** Light cure through the template and composite simultaneously. Composite should be cured thoroughly and according to manufacturer's instructions.



**9.** Remove the Uvener template by gently lifting the handle. Final cure directly onto composite.



**10.** Avoiding the glossy facial surface, trim excess composite from periphery.



**11.** Immediately after use, thoroughly wipe template with alcohol pad, dry, bag, and autoclave according to Uvener IFU. Do not leave any composite residue on the template in order to maintain translucency and shine.

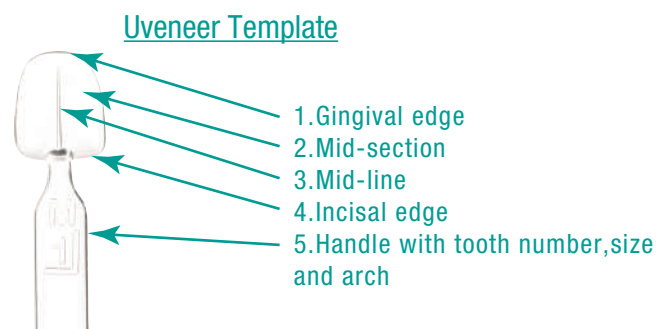
It is typical not to further polish the composite surface as the template will create an ideal gloss by blocking the oxygen inhibition layer.

For more details visit - <https://uvener.com/instructions/>



Large Set

Medium Set



### UVKV1 Uvener Kit

16 x Medium upper and lower arch templates  
16 x Large upper and lower arch templates

Medium and large templates provide 2 central incisors, 2 lateral incisors, 2 canines, and 2 premolar templates for both the upper and lower arches.

# Dealer: